

GANZ Installation Tool

ZNS-GIT IPAdmin Tool

for H.264 Network Dome camra
H.264 Network CS mount camera
H.264 ENCODER

Operation Manual
ZNS-GIT Software



Table of Contents

1. Introduction	3
1.1. Requirements	3
1.2. Starting ZNS-GIT IPAdmin Tool.....	4
1.3. Menu and button configuration.....	5
2. Scanning Devices	7
2.1. How to search your device	7
2.2. IP management for devices.....	8
2.3. How to check your device Information remotely	9
3. Updating Firmware.....	10
4. Other Features	14
4.1. How to reboot the device remotely.....	14
4.2. How to set the retransmit interval for mDNS queries	15

1. Introduction

ZNS-GIT IPAdmin Tool is a utility program for IP products, including encoders and cameras. The following list provides a brief summary for the feature of this tool.

- Configure IP address, subnet mask, gateway, DNS, and hostname
- Search available IP devices on network
- Show device information
- Update new firmware on single or multiple devices
- Reboot the system remotely

1.1. Requirements

ZNS-GIT IPAdmin Tool can be run properly in Windows 2000™, Windows XP™ or later Windows®. *IPAdminToo.exe* and *IPAdminTool.dll* must be in the same folder, otherwise an error message is shown as the following エラー! 参照元が見つかりません。 .



Figure 1. Warning message for IPAdminTool.dll

Factory default IP and password:

ID – root
PW - pass

1.2. Starting ZNS-GIT IPAdmin Tool

ZNS-GIT IPAdmin Tool is provided with following SDK path.

{SDK root}\BIN\TOOLS\AdminTool\

Start ZNS-GIT IPAdmin Tool by running IPAdminTool.exe. On the main page of the tool, you can see that the IP devices are being scanned. It re-scans network to keep updating IP devices on the list every 2 seconds. If required, you can manually perform the scanning by pressing the *Refresh* button.

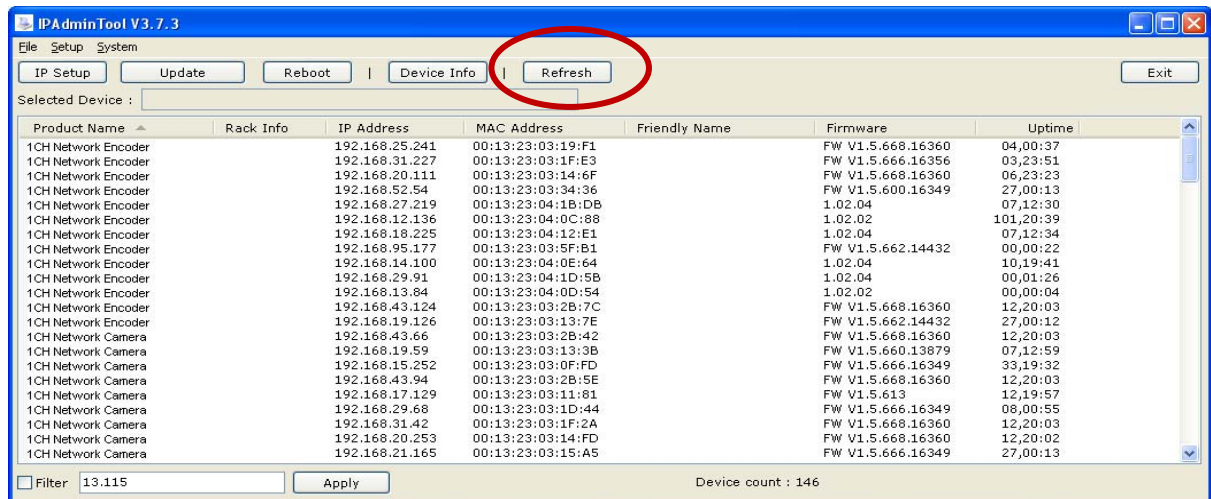


Figure 2. Refresh

1.3. Menu and button configuration

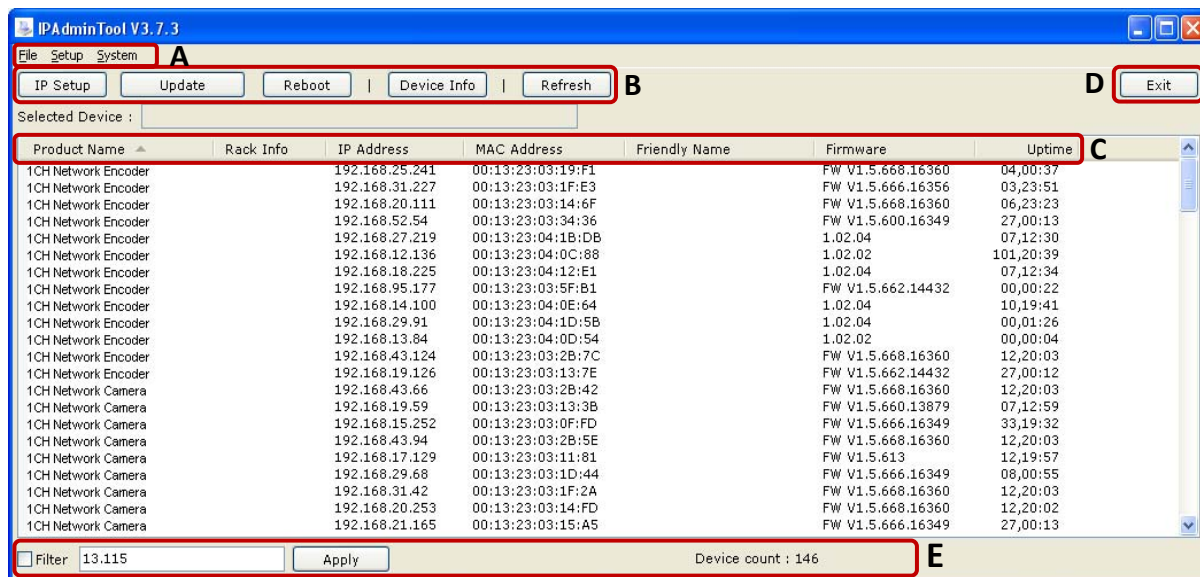


Figure 3. Options

Section A

File

Refresh – Refresh the list and get the IP devices information.

Exit – Quit this program.

Setup

IP Address – Set IP configuration such as IP address, subnet mask, default gateway, etc.

Hostname – Set a new hostname.

Frequency setting – Set the message sending frequency for MDNS.

System

Update – Update the firmware or any other required files.

Device info – Show the device information.

Reboot – Reboot the device.

Section B

IP Setup - Set the IP configuration such as IP address, subnet mask, default gateway etc.

Protect Update - Upload the firmware or any other required files.

Reboot - Reboot the device.

Device Info– Show the device information.

Refresh – Refresh the list and get the IP devices information.

Section C

Product Name – Product name of your device is displayed. It can be modified by uploading the brand file involving the product name. *Rack Info* – If the scanned device is rack type, the related rack information is displayed.

IP Address – IP Address of your device is displayed.

MAC Address – MAC Address of your device is displayed.

Hostname – The hostname of your device is displayed. Changing the host name is not allowed.

Firmware – The current firmware version of your device is displayed.

Uptime – The passed time since the system is booted (Days: Hours: Minutes).

Section D

Exit – Quit this program.

Section E

Filter – Type any part of numbers of the IP address, check in the Filter box and click the Apply button. Then ZNS-GIT IPAdmin Tool will scan only IP devices that include typed numbers.

Device count – The total number of scanned devices

2. Scanning Devices

2.1. How to search your device

Before running the ZNS-GIT IPAdmin Tool for finding a device, check out if the device is powered on and connected the network properly.

1. Run ZNS-GIT IPAdmin Tool and wait a second while it scans the IP devices.
2. Right-click on a device name and then a shortcut menu appears as below. Choose the 'Web view' and you can see that the Web Page for the device appears.

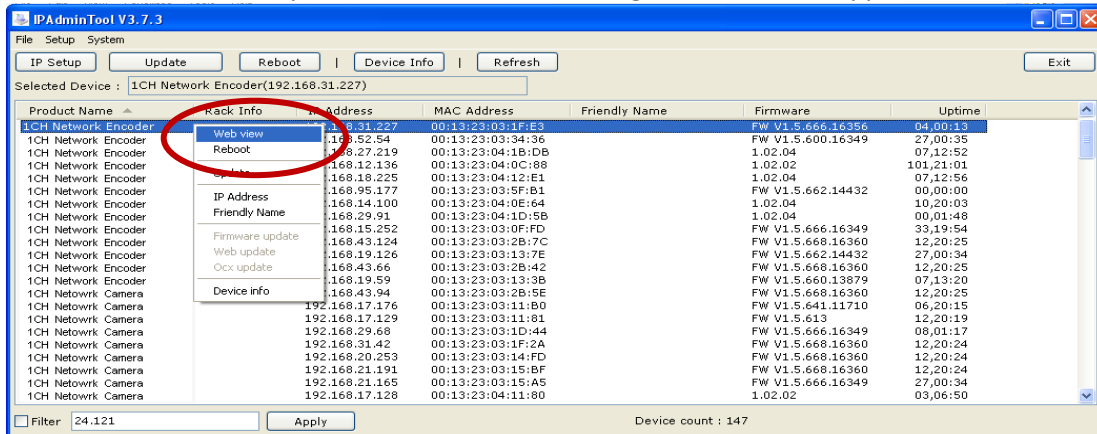


Figure 4. Web View

IP Filtering – When you have multiple devices

If your network has multiple IP devices and ZNS-GIT IPAdmin Tool scans too many IPs, you can easily find the desired device by using the IP filtering feature. Type any part of numbers of the IP address in the blank, check in the Filter box and click the Apply button. Then ZNS-GIT IPAdmin Tool will scan only the IP devices that include typed numbers. Refer to the picture below for an example.

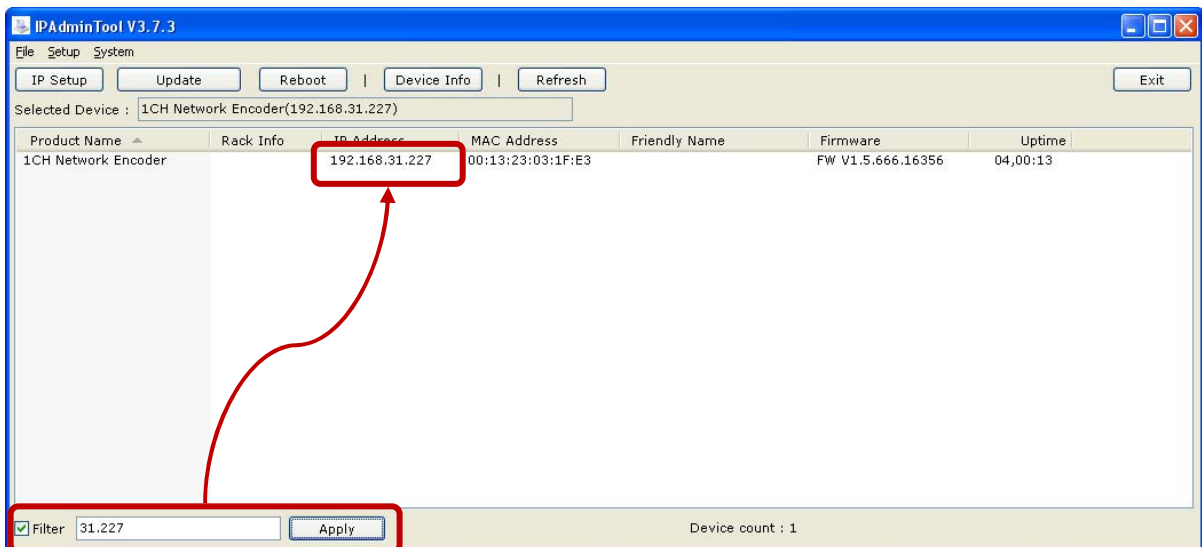


Figure 5. Filter

2.2. IP management for devices

You can adjust the network setting with ZNS-GIT IPAdmin Tool. Click the **IP Setup** button on the upper menu bar or **IP Address** from the shortcut menu.

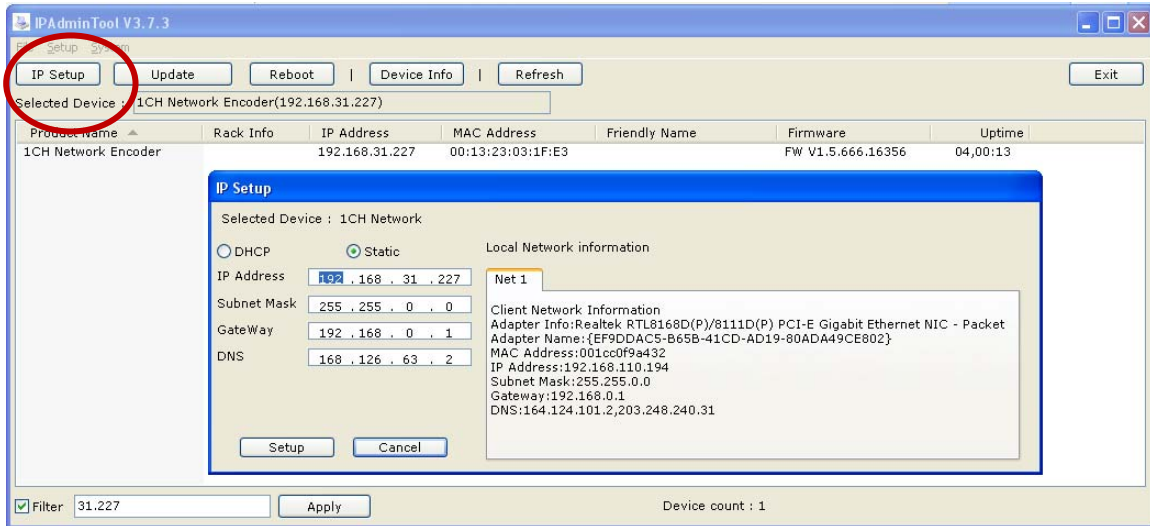


Figure 6. IP Setup

DHCP

Let the DHCP server get the IP address automatically.

Static

Set the IP address, Subnet Mask, Gateway and DNS manually according to users' network requirements.

2.3. How to check your device Information remotely

The software version information of IP devices can be displayed by selecting the **System > Device Info** menu. You can check the information by selecting **Device Info** from the shortcut menu.

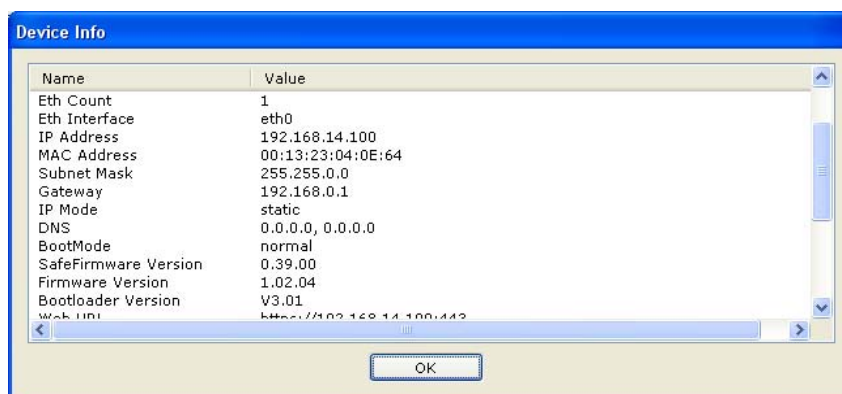


Figure 7. Device Info

You can find the device information as below.

- Device Type
- Product Name
- Host Name
- Ethernet Count
- Ethernet Interface
- IP Address
- MAC Address
- Subnet Mask
- Gateway
- IP mode
- DNS
- BootMode
- Firmware Version
- SafeFirmware Version
- Bootloader Version
- Web URL
- Web Port
- RTSP Port
- Update Port
- Uptime
- System Key Method
- Device Serial
- Description

3. Updating Firmware

ZNS-GIT IPAdmin Tool provides the firmware update feature for single or multiple IP devices.

Tip. Want to update multiple devices at the same time?

Choose the multiple devices with *Ctrl* or *Shift* key and find the **Update** button on the upper menu (The mouse shortcut menu also provides the **Update** menu).

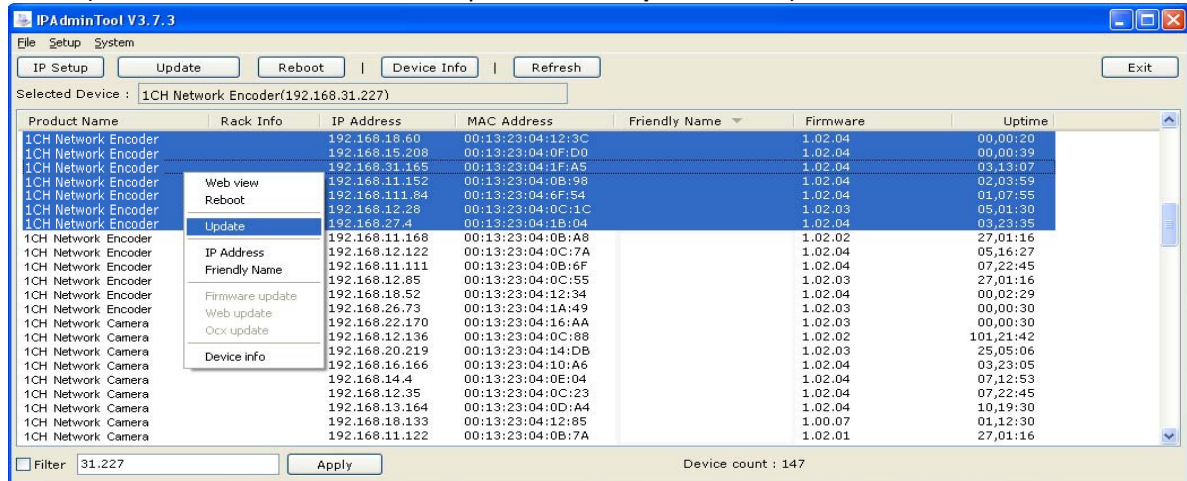


Figure 8. Protect Update of multiple devices

Step1. Select IP device

Select the device you want from the list and it turns blue. Right-click it and select the **Update** menu. You can see the window below and the selected devices are listed.

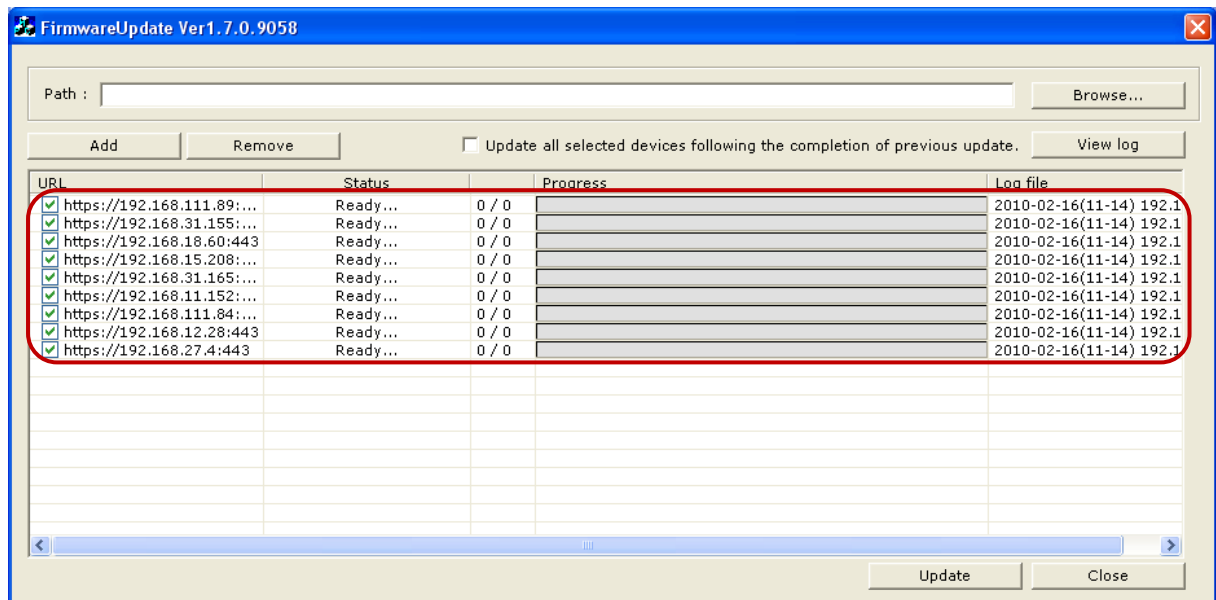


Figure 9. Selected devices list

Tip. Is your device not searched by ZNS-GIT IPAdmin Tool?

Your devices may have been connected to the external network or mDNS feature may have been disabled on your device. In this case, you can add the device manually by typing the IP address for firmware update.

Click the *Add* button and the 'Add device' window pops up. Select *https* or *http* according to your device protocol type (The factory default is HTTPS). Type the IP Address you want to update and click the *Add* button. Then, you can see that the IP advice is newly added.

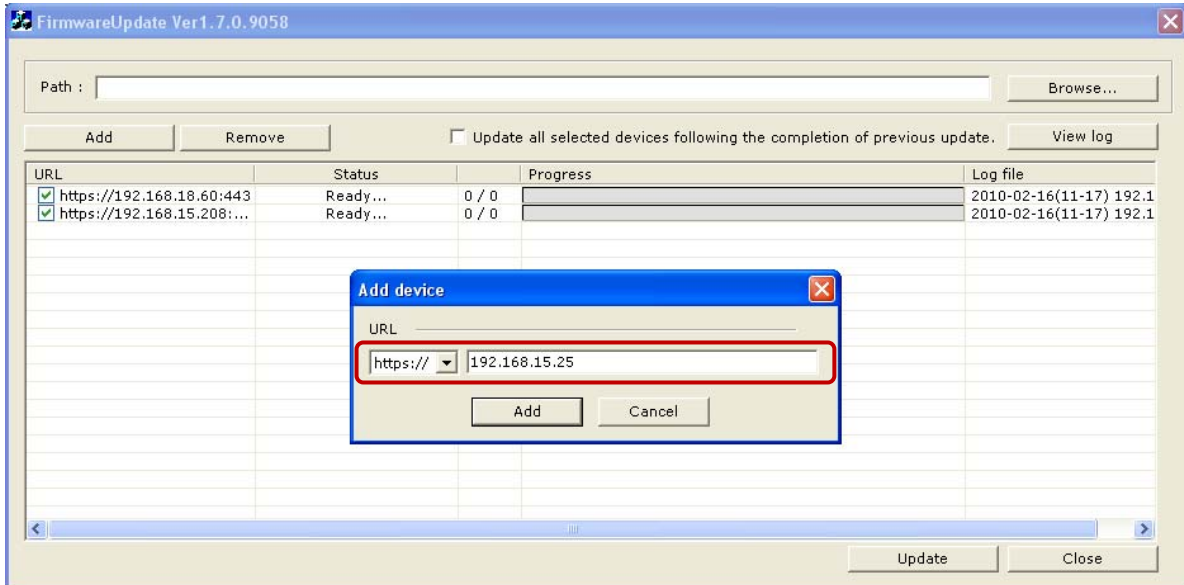


Figure 10. Add device

Tip. To remove devices from the selected list :

If you want to remove the device from the selected list, select the URL check box and click the *Remove* button. Then, the selected device is removed.

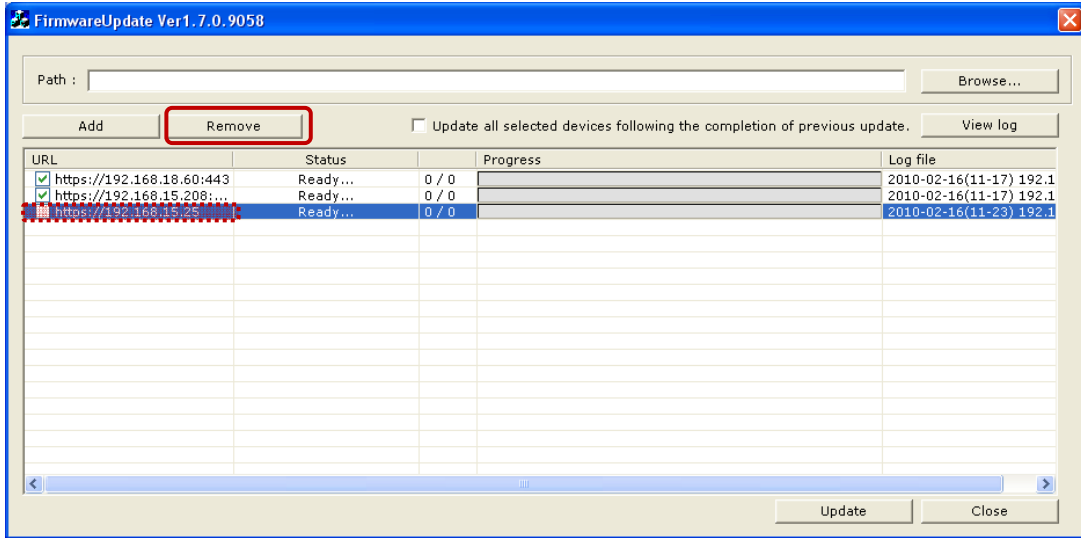
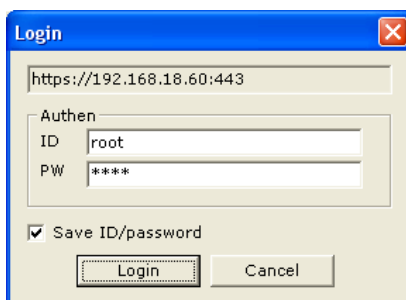


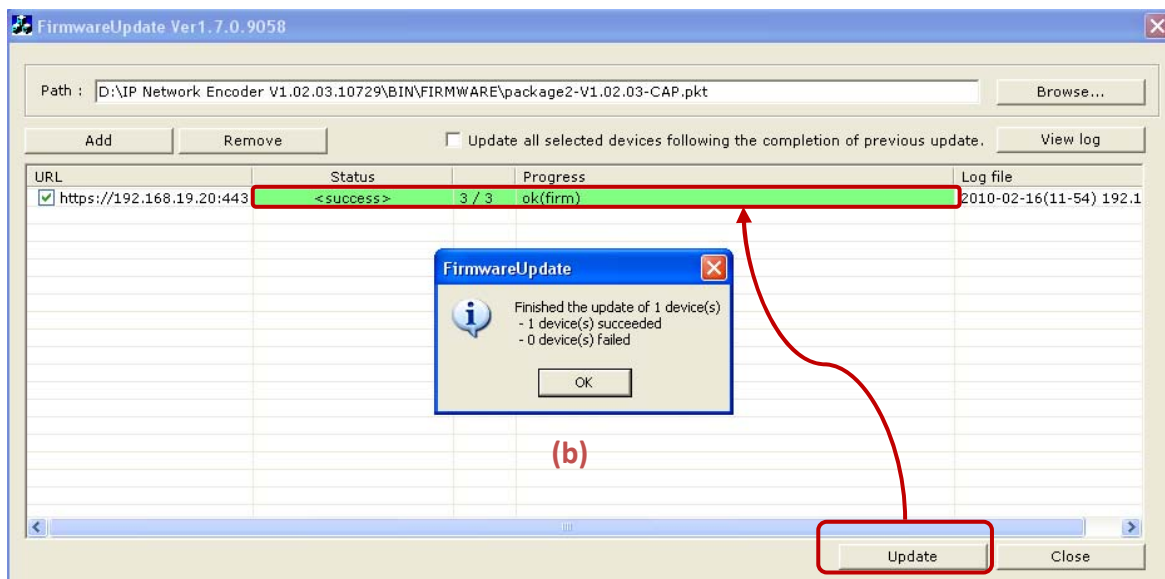
Figure 11. Remove device

Step2. Browse the firmware file and update

1. Now, if you have completed listing up the devices you want to update, click the **Browse** button and select the firmware file (File format : *.pkt).
2. Click the **Update** button.
3. It requires the log-in authentication as picture below (a). Type the ID and password of administrator authentication. The factory default is root(ID) and pass(pw).
4. Wait for a few seconds and the progress bar will show you the current status of update. If the update process is completed, the 'All update finish' message box is shown as below.



(a)



(b)

Figure 12. Completed firmware update

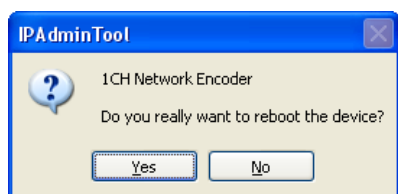
Step3. Reboot the system

After the completion of the firmware update, you should wait for about 1 minute until the device restarts. Even after the completion of update and reboot of the system, if your device is not shown on the scanned list of ZNS-GIT IPAdmin Tool, click the **Refresh** button or try to type the IP address on the Internet Explorer's address bar.

4. Other Features

4.1. How to reboot the device remotely

You can reboot the IP device by clicking the **Reboot** button or the **Reboot** option from the shortcut menu. If you choose the **Reboot** menu, the dialog box (a) appears as shown below. Then, click the **Yes** button log in by entering your ID and password as the pop-up window (b). After that, click the **OK** button on the pop-up window (c). Now, the device will get restarted in about 1.5 minutes.



(a)



(b)



(c)

Figure 13. Reboot

4.2. How to set the retransmit interval for mDNS queries

To set the MDNS message frequency, select **Setup > Frequency Setting** from the menu. If the pop-up window appears as below, set the desired frequency and click the Save button to save the changes.

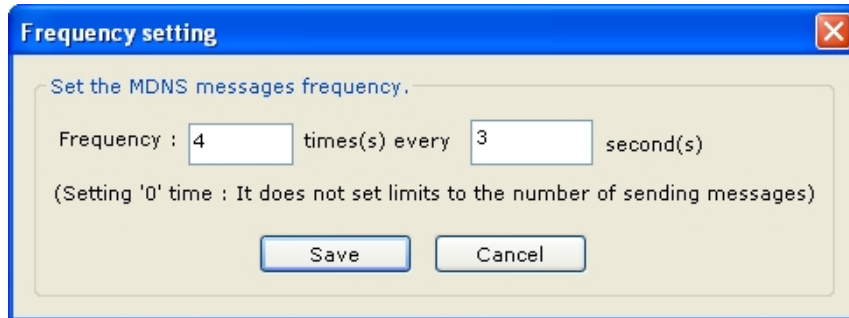


Figure 14. mDNS frequency

What is mDNS?

The ZNS-GIT IPAdmin Tool uses a specific protocol, multicast DNS (mDNS), to get the information of devices on the network. When the ZNS-GIT IPAdmin Tool is run by a user, it sends the packets which request the answers from devices. The results are shown on each tab of ZNS-GIT IPAdmin Tool.

You can adjust the retransmit interval for the mDNS queries in this menu.

As an example above, if you set the frequency as '4 times every 3 seconds,' your ZNS-GIT IPAdmin Tool would send out the mDNS queries 4 times in every 3 seconds and you will get the responses from all devices. If you set the times as '0,' it keeps sending the queries without limit.

If you have completed the setting, click the **Refresh** button on the main menu of ZNS-GIT IPAdmin Tool. Then, the list will be refreshed according to your frequency setting.

NOTE : Too frequent nDNS queries may result in the increase of the network load.