

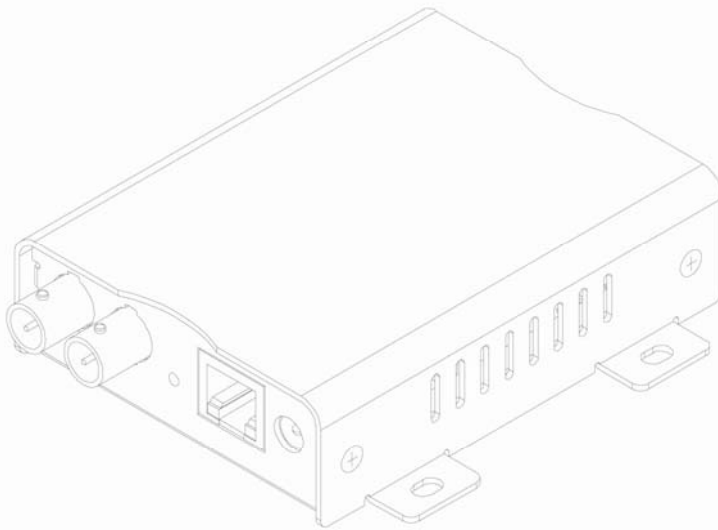
1CH Encoder

# **ZN-S100V**

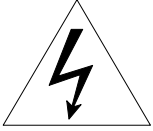
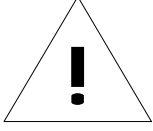
## **1CH H.264 Encoder**

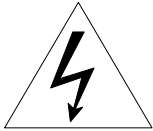
---

| Installation Manual



## INFORMATION TO USER

|  |   |                |  |   |
|--|---|----------------|--|---|
|   | <table border="1"><tr><td><b>CAUTION</b></td></tr><tr><td>RISK OF ELECTRIC SHOCK,<br/>DO NOT OPEN</td></tr></table> | <b>CAUTION</b> | RISK OF ELECTRIC SHOCK,<br>DO NOT OPEN |  |
| <b>CAUTION</b>   |   |                |  |   |
| RISK OF ELECTRIC SHOCK,<br>DO NOT OPEN   |   |                |  |   |
| <p>CAUTION: TO REDUCE THE RISK OF ELECTRIC SHOCK,<br/>DO NOT REMOVE COVER (OR BACK).<br/>NO USER SERVICEABLE PARTS INSIDE.<br/>REFER SERVICING TO QUALIFIED SEERIVCE PERSONEL.</p> |   |                |  |   |



This symbol is intended to alert the user to the presence of un-insulated “dangerous voltage” within the product’s enclosure that may be of sufficient magnitude to constitute a risk of electric shock to persons.



This symbol is intended to alert the user to the presence of important operating and maintenance (servicing) instructions in the literature accompanying the appliance.

---

# Table of Contents

|  |           |
|--|-----------|
| <b>1. FEATURES</b> .....                           | <b>4</b>  |
| <b>2. PACKAGE CONTENTS</b> .....                   | <b>5</b>  |
| <b>3. PART NAMES</b> .....                         | <b>6</b>  |
| 3.1. Front Panel .....                             | 6         |
| <b>4. CONNECTIONS</b> .....                        | <b>7</b>  |
| <b>5. CONFIGURATION</b> .....                      | <b>8</b>  |
| 5.1. Set up network environment .....              | 8         |
| 5.2. View video on web page .....                  | 8         |
| 5.2.1. View video using ZNS-GIT IPAdmin Tool ..... | 8         |
| 5.2.2. View video using IP address .....           | 11        |
| 5.3. Reset.....                                    | 11        |
| 5.4. Factory Default.....                          | 11        |
| <b>6. WALL-MOUNTING</b> .....                      | <b>12</b> |
| <b>APPENDIX (A): SPECIFICATIONS</b> .....          | <b>13</b> |
| Summary .....                                      | 13        |
| Electrical Characteristics .....                   | 13        |
| Environment Condition .....                        | 13        |
| VCA (Video Content Analysis) .....                 | 13        |
| <b>APPENDIX (B): DIMENSIONS</b> .....              | <b>15</b> |
| <b>APPENDIX (C): TROUBLE SHOOTING</b> .....        | <b>16</b> |
| Checking your Firmware .....                       | 16        |
| Support.....                                       | 16        |

# 1. FEATURES

---

## Streaming

- Dual streaming mode (such as different codec/resolution/bit rate and so on.)
- De-interlacing on DSP
- Burnt-in text supported
- Unicast/Multicast supported

## Video

- Video compression: H.264/MPEG/MJPEG, 25/30FPS@D1(PAL/NTSC)
- Analog video out for external monitors
- Video Motion Detection supported

## Network

- RTSP/ HTTP protocol supported
- 10/100 Base-T Ethernet

## Additional Features

- Built-in Video Content Analysis
- SDK (Software Development Kit) provided

## VCA (Video Content Analysis)

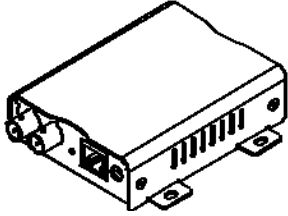
- VCA Presence (Included as basic)
- VCA Surveillance (Optional)

## 2. PACKAGE CONTENTS

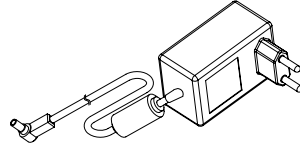
---

Unpack carefully and handle the equipment with care. The packaging contains:

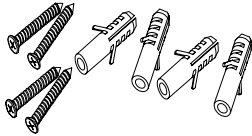
ZN-S100V



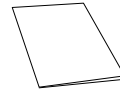
DC power adaptor



Screws and anchor blocks



Quick Installation Guide



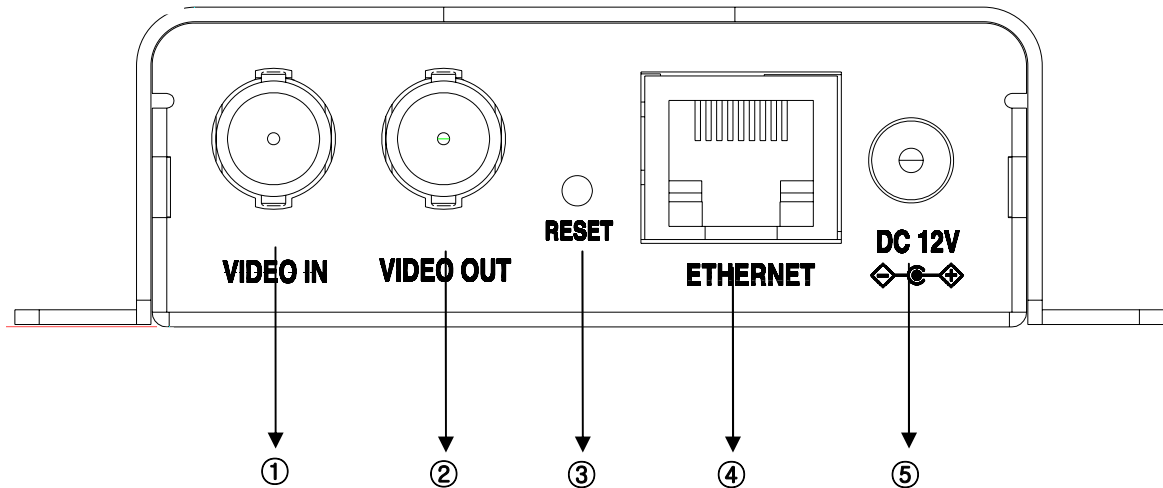
The above contents are subject to change without prior notice.

---

## 3. PART NAMES

---

### 3.1. Front Panel



**① Video Input BNC connector**

As a video input connector, connect to the camera.

**② Video Loop out BNC connector**

As an output connector, connect to a device such as a VCR or monitor.

**③ Reset**

Reboot the device system or set the device to its Factory default settings. Refer to the section “5.3. Reset” for more specific information.

**④ LAN connector**

Use the RJ45 LAN connector for 10/100 Base-T Ethernet.

**⑤ Power connector**

Connect the power adaptor for power supply. DC 12V 1A adaptor is needed.

## 4. CONNECTIONS

---

### Video connection

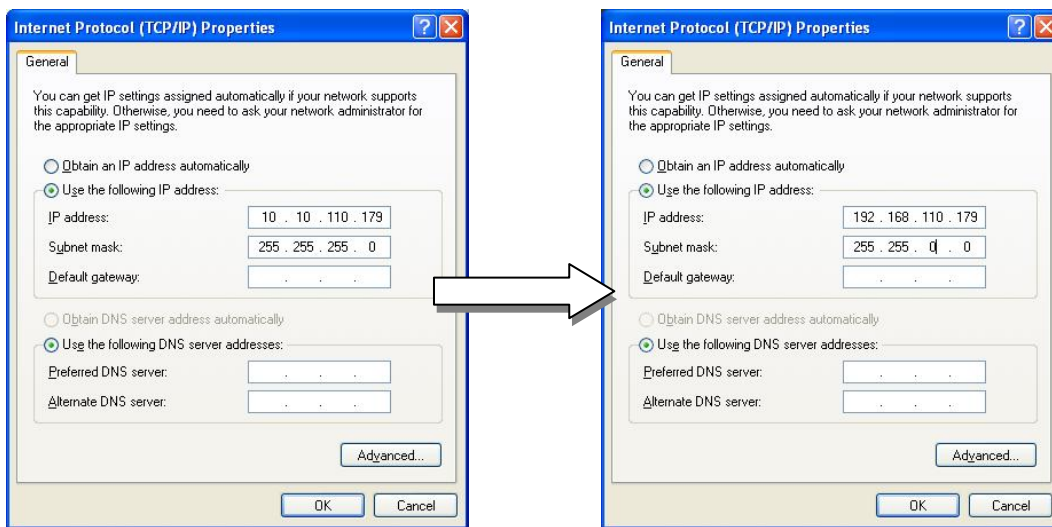
Connect the camera to the **Video input connectors** on the back panel using 75 ohm video coaxial cables with a BNC connector. Each video channel input among these connections can be looped to other equipments as CRT monitor through **External Video output connector**.

# 5. CONFIGURATION

## 5.1. Set up network environment

The default IP address of your IP device is 192.168.XXX.XXX. You can find the available IP address from the MAC address of your device. Please make sure the device and your PC are on the same network segment before running the installation. If the network segment between your PC and the device is different, change your PC's settings as below.

IP address : **192.168.xxx.xxx**  
 Subnet mask: **255.255.0.0**



## 5.2. View video on web page

View the live video on a web page using your IP device and its IP address. You can use the ZNS-GIT IPAdmin Tool or enter the IP address on the web page.

### 5.2.1. View video using ZMS-GIT ZNS-GIT IPAdmin Tool

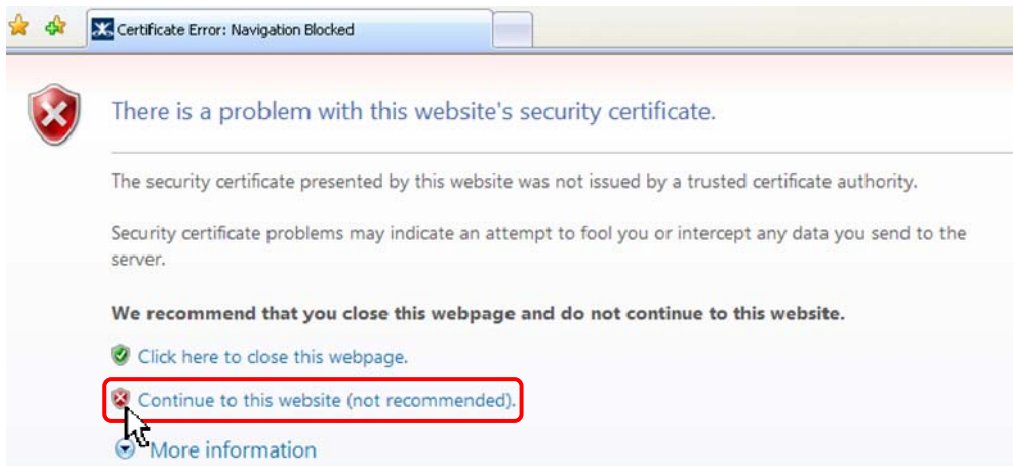
ZNS-GIT IPAdmin Tool automatically searches all activated GANZ encoder and network camera series and shows the product name, IP address, MAC address and etc. ZNS-GIT ZNS-GIT IPAdmin Tool is provided with SDK at the following SDK path.

{SDK root}\BIN\TOOLS\AdminTool\



To use the ZNS-GIT ZNS-GIT IPAdmin Tool and view the live video on a web page:

1. Start ZNS-GIT ZNS-GIT IPAdmin Tool. Names and info of currently activated devices appear as a list.
2. Right-click on the desired device and select **Web view**.
3. Select **Continue to this website** on the Security Certificate Alert page.  
(The explanation and captured images at this manual are mainly on the basis of Internet Explorer 7.0)



4. Click **pop-up blocked** and install the ActiveX control as below. You need to install the ActiveX for displaying the images.



5. Wait for a few seconds while the web page loads. The live video is displayed as below.



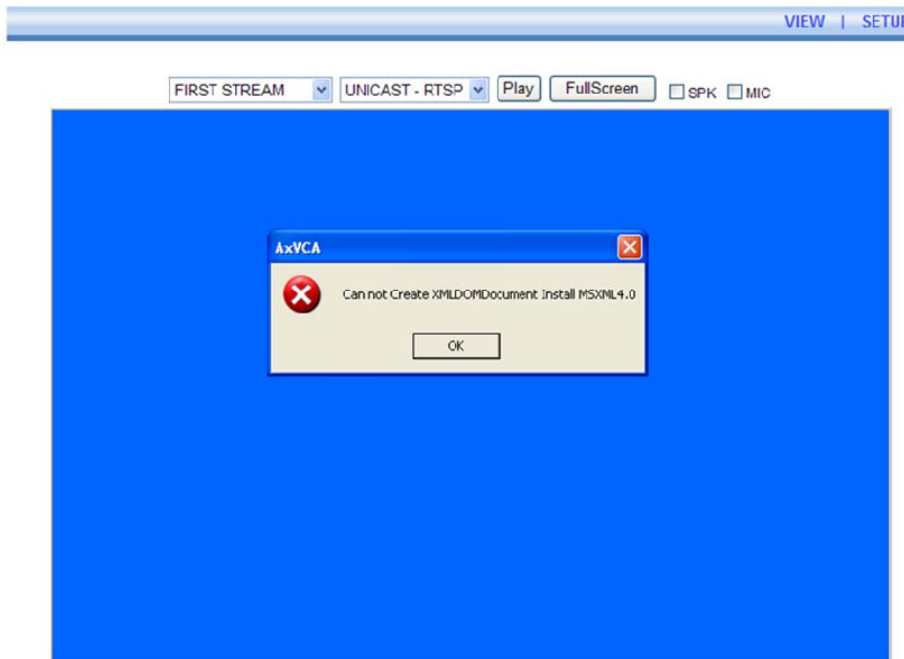
Plugin1 Plugin2

v1.20.00

6. If the live video is not displayed and “Can not Create XMLDOMDocument Install MSXML4.0” message is shown as below, please download and Install from the link below.

<http://www.microsoft.com/downloads/details.aspx?familyid=3144B72B-B4F2-46DA-B4B6-C5D7485F2B42&displaylang=en>

(VCA Library requires MS XML 4.0 library which is an xml parser made by Microsoft.)

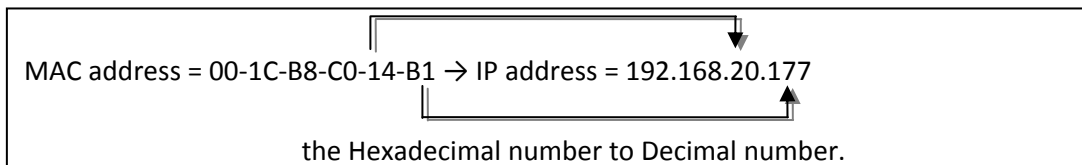


## 5.2.2. View video using IP address

View the live video on a web page using your IP device and its IP address. To have the correct IP address ready and use it on a web page:

1. Convert a MAC address to an IP address or check the IP address on the ZNS-GIT IPAdmin Tool.

(The MAC address is attached on the side or bottom of the device.)



2. Open a web browser and enter the IP address of the device.
3. Click **Continue to this website** on the Security Certificate Alert page.
4. Click **pop-up blocked** and install the ActiveX control. You need to install the ActiveX for displaying the images.
5. Wait for a few seconds while the web page loads. The live video is displayed.

## 5.3. Reset

1. While the device is in use, press and hold the Reset button.
2. Release the Reset button after 3 seconds.
3. Wait for the system to reboot.

## 5.4. Factory Default

1. Disconnect the power supply from the device.
2. Connect the power to the device with the Reset button pressed and held.
3. Release the Reset button after 5 seconds.
4. Wait for the system to reboot.

The factory default settings can be inferred as follows:

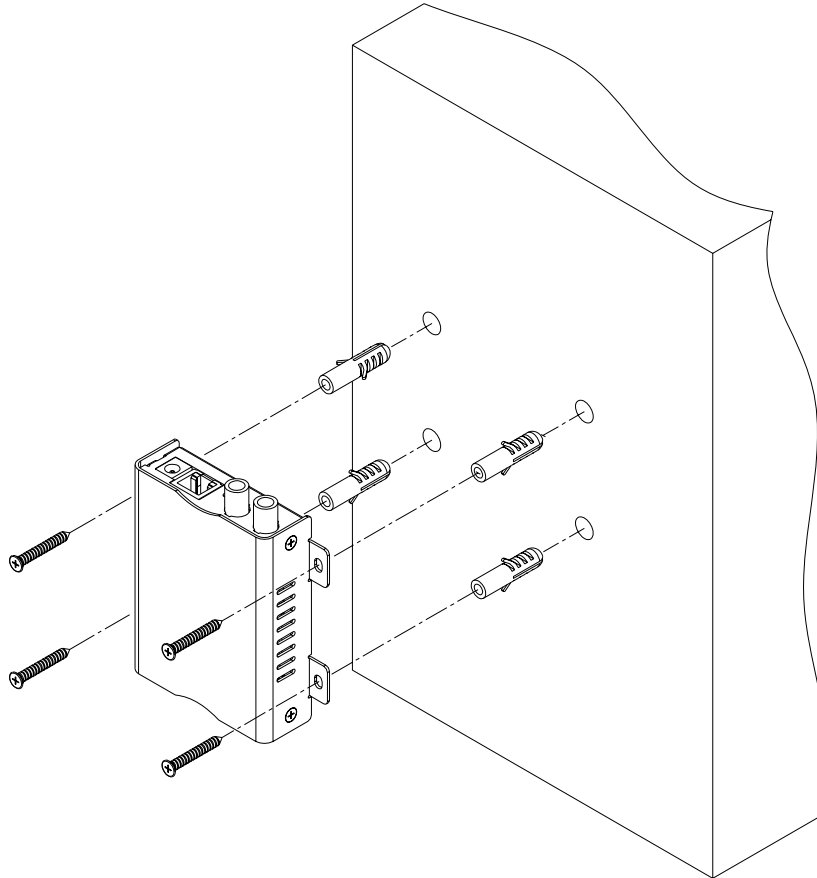
|               |               |
|---------------|---------------|
| IP address:   | 192.168.xx.yy |
| Network mask: | 255.255.0.0   |
| Gateway:      | 192.168.0.1   |
| User ID:      | root          |
| Password:     | pass          |

## 6. WALL-MOUNTING

---

To wall-mount the ZN-S100V, follow this instruction:

The ZN-S100V has one mounting hole on each side. Mount the device using the included screws and anchor blocks. Refer to the image below.



# APPENDIX (A): SPECIFICATIONS

## Summary

| Video                   |  |
|-------------------------|--|
| Compression Format      | H.264, MPEG-4, MJPEG Selectable per Stream   |
| Number of Streams       | Dual Stream, Configurable  |
| Resolution              | D1, 4CIF, VGA, CIF, QCIF, QVGA   |
| Compression FPS         | 25/30 fps@D1 (PAL/NTSC)  |
| Deinterlacing           | Supported (DSP)  |
| Motion Detection        | Supported  |
| OSD                     | Supported (DSP)  |
| Burnt-in Text (Digital) | Supported (DSP)  |
| Output                  | 1 Loop Out (BNC connector)   |
| Function                |  |
| Network                 | 10/100 Base-T  |
| Power over Ethernet     | Not Supported  |
| Protocol                | TCP/IP, UDP/IP, HTTP, RTSP, RTCP, RTP/UDP, RTP/TCP, SNTP, mDNS, UPnP, SMTP, SOCK, IGMP, DHCP, FTP, DDNS, SSL v2/v3, IEEE 802.1X, SSH |
| Dimensions              | 94.6(W) x 26(H) x 106.6(D) mm  |

## Electrical Characteristics

|                      |               |
|----------------------|---------------|
| Video Input          | 1Vp-p, 75Ω    |
| Video Output         | 1Vp-p, 75Ω    |
| Power Source(Approx) | 12 V DC 220mA |

## Environment Condition

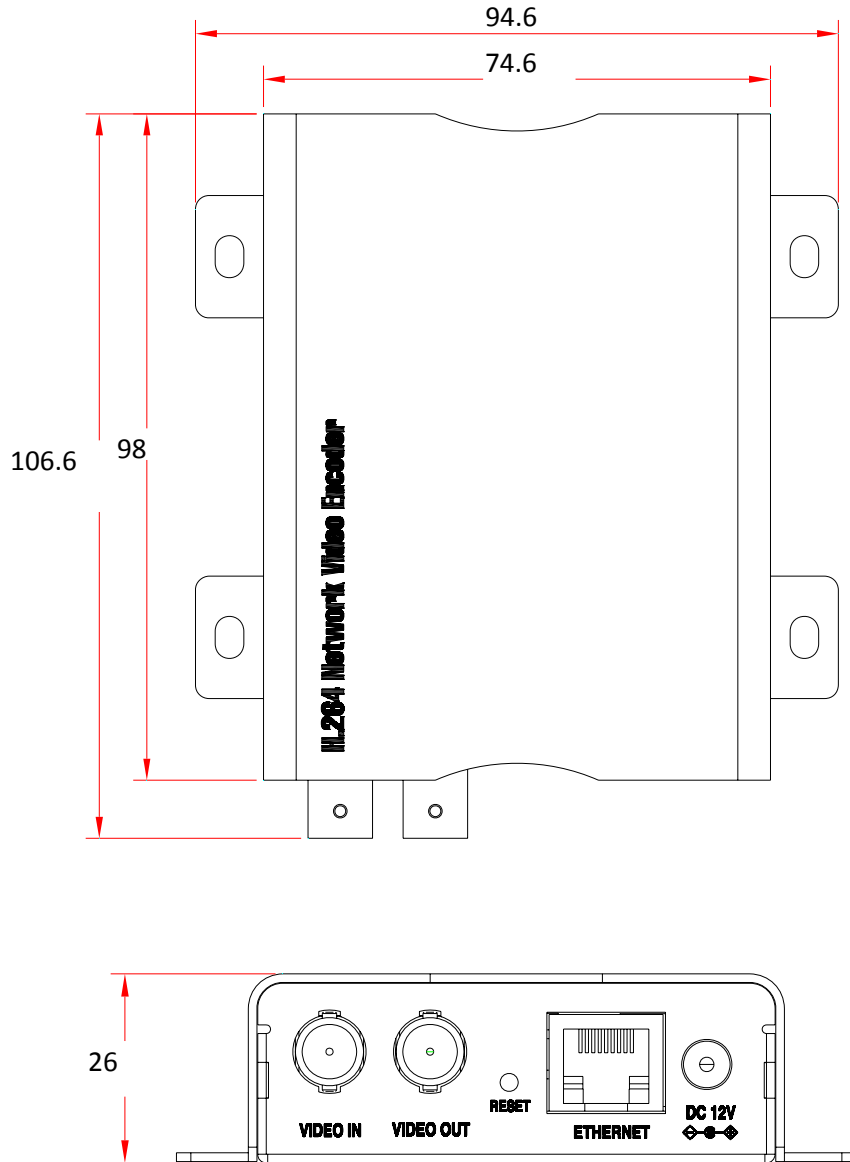
| Parameter             | Limited Range                 |
|-----------------------|-------------------------------|
| Operating Temperature | 0 °C ~ 50 °C (32 °F ~ 140 °F) |
| Operating Humidity    | Up to 85% RH                  |

## VCA (Video Content Analysis)

| VCA Presence (Included as Standard) |   |
|-------------------------------------|---|
| High Performance                    | Advanced Tracking Algorithm, Low False Alarm Rate |
| Easy to Use                         | Intuitive Web Browser Interface                   |
| Detection Zones                     | Multi-segment Polygons and Lines                  |

|                                |  |
|--------------------------------|--|
| On-screen Display              | Real-time Display of Tracking Data and Events  |
| Burnt-in Annotation            | Stream or Analog video out<br>(※Analog video out support can vary depending on the device model and hardware version and the firmware version) |
| VCA Surveillance (Optional)    |  |
| Detection Behavior             | Camera Tampering, Direction, Stopping, Loitering, Entering, Exiting, Appear, and Disappear Filters   |
| 3D Behavior                    | Perspective Corrected Size and Speed Filters   |
| Statistics                     | Counting Functions and Other Statistics  |
| Meta Data                      | Binary XML Format  |
| Image Stabilization (Optional) |  |
| Electronic Stabilization       | Removes Camera Sway  |

## APPENDIX (B): DIMENSIONS



(Unit: mm)

# APPENDIX (C): TROUBLE SHOOTING

---

## Checking your Firmware

Firmware is software that determines the functionality of the device. One of your first actions when troubleshooting a problem should be to check the currently installed version. The latest version may contain a correction that fixes your particular problem. The current firmware version in your device can be seen under Setup > About > Version

New firmware can be downloaded at the FTP site. When you download firmware from the FTP, your product will receive the latest available functionality. Always read the upgrade instructions and release notes available with each new release, before updating the firmware. Please contact us to get an FTP account.

## Support

If you cannot resolve an issue, for additional assistance, please contact your supplier or system integrator

If you contact our support, please help us help you resolve your problems expediently by providing a server report, log file and a brief description of the problem.

1. In the address bar of your browser, after the unit IP address enter following CGI command.

```
<IP ADDRESS> /nvc-cgi/admin/param.cgi?action=list
```

The server report contains important information about the device, as well as a list of the current parameters.

2. The Log messages in the device can prove a useful diagnostic tool for troubleshooting.  
Go to Setup > Maintenance > System Log > LOG LIST > message.