

H10Z0812DC

10X 8mm - 80mm F1.2
for 1/2 type Cameras, Motorized Zoom
C-Mount

with DC Auto Iris

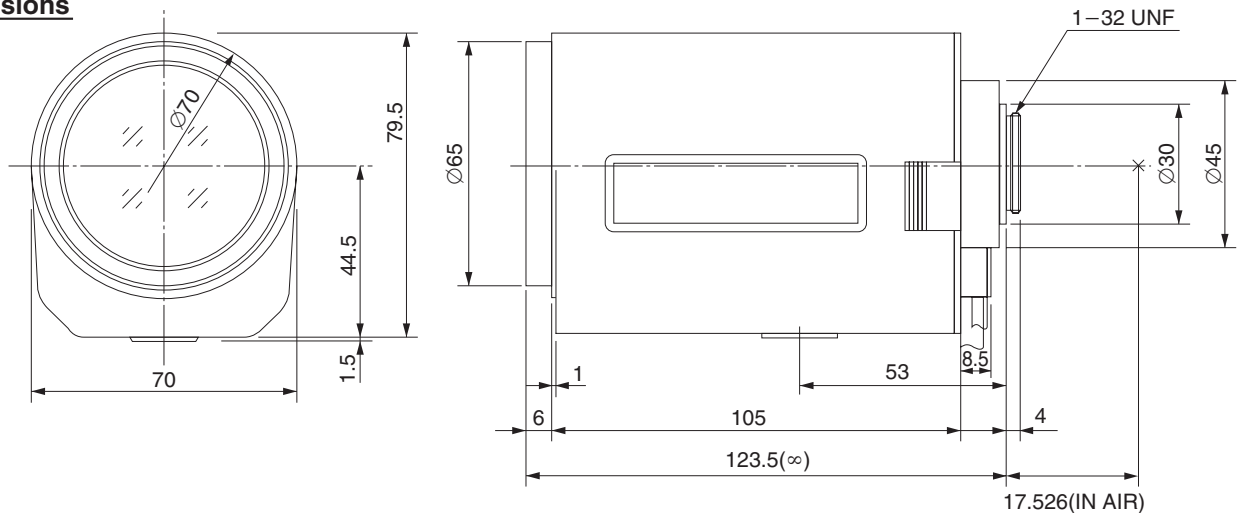
Model No.	H10Z0812DC		Effective	Front	Ø54.0mm			
Focal Length	8mm - 80mm		Lens Aperture	Rear	Ø14mm			
Max. Aperture Ratio	1:1.2		Back Focal Length		15.3mm			
Max. Image Format	6.4mm x 4.8mm(Ø8mm)		Flange Back Length		17.526mm			
Operation Range	Iris	F1.2 - F560C		Mount	C-Mount			
	Focus	1.5m - Inf.		Filter Size	M62 P=0.75mm			
	Zoom	8mm - 80mm		Tripod Screw	1/4 - 20UNC			
Control	Iris	DC Auto Iris		Dimensions	W70mm x H81mm x D123.5mm			
	Focus	Motorized		Weight	630g			
	Zoom	Motorized						
Object Dimension at M.O.D.	8mm	124.8cm x 92.5cm						
	80mm	12.3cm x 9.2cm						
Angle of View	D	1/2 type	54.3° - 5.8°	1/3 type	41.3° - 4.4°	1/4 type	31.2° - 3.3°	
	H		44.0° - 4.7°				33.3° - 3.5°	25.0° - 2.6°
	V		33.3° - 3.5°				25.0° - 2.6°	18.8° - 2.0°
		Iris		Focus		Zoom		
Supply Voltage	—		DC8V		DC8V			
Current	—		40mA or less		35mA or less			
Response Time	—		Approx. 4.5 sec.		Approx. 3.5 sec.			
Preset Potentiometer	—		—		—			
Coil	Drive	190Ω						
	Control	1000Ω						
Operating Temperature	-10°C - +50°C							

1/2 type

C

M.O.D. : Minimum Object Distance

Dimensions



Wiring Diagram

